

# COREMEDIA CONTENT CLOUD

## Commercetools Connector Manual



Copyright CoreMedia GmbH © 2021

CoreMedia GmbH

Ludwig-Erhard-Straße 18

20459 Hamburg

### **International**

All rights reserved. No part of this manual or the corresponding program may be reproduced or copied in any form (print, photocopy or other process) without the written permission of CoreMedia GmbH.

### **Germany**

Alle Rechte vorbehalten. CoreMedia und weitere im Text erwähnte CoreMedia Produkte sowie die entsprechenden Logos sind Marken oder eingetragene Marken der CoreMedia GmbH in Deutschland. Alle anderen Namen von Produkten sind Marken der jeweiligen Firmen.

Das Handbuch bzw. Teile hiervon sowie die dazugehörigen Programme dürfen in keiner Weise (Druck, Fotokopie oder sonstige Verfahren) ohne schriftliche Genehmigung der CoreMedia GmbH reproduziert oder vervielfältigt werden. Unberührt hiervon bleiben die gesetzlich erlaubten Nutzungsarten nach dem UrhG.

### **Licenses and Trademarks**

All trademarks acknowledged.  
March 23, 2021 (Release 2010 )

- 1. Preface ..... 1
  - 1.1. Audience ..... 2
  - 1.2. Typographic Conventions ..... 3
  - 1.3. Change Record ..... 5
- 2. Overview ..... 6
  - 2.1. Commerce Hub Architecture ..... 7
  - 2.2. Commerce Hub API ..... 9
- 3. Connecting to a commercetools System ..... 11
  - 3.1. Configuring the Commerce Adapter ..... 12
  - 3.2. Configuring the Shop in Content Settings ..... 13
  - 3.3. .... 15
  - 3.4. Checking the Functionality ..... 15
- 4. Studio Integration of Commerce Content ..... 16
  - 4.1. Catalog View in CoreMedia Studio Library ..... 17
  - 4.2. Augmenting Commerce Content ..... 20
    - 4.2.1. Augmenting the Root Nodes ..... 20
    - 4.2.2. Selecting a Layout for an Augmented Page ..... 21
    - 4.2.3. Finding CMS Content for Category Overview Pages ..... 22
    - 4.2.4. Finding CMS Content for Product Detail Pages ..... 24
    - 4.2.5. Adding CMS Content to Non-Catalog Pages (Other Pages) ..... 26
- 5. Commerce Cache Configuration ..... 28
- 6. The eCommerce API ..... 30
- 7. Commerce Adapter Properties ..... 32
- Glossary ..... 37
- Index ..... 41

## List of Figures

2.1. Architectural overview of the Commerce Hub .....	7
2.2. More detailed architecture view .....	7
3.1. Example Commerce Settings .....	13
4.1. Library with catalog in the tree view .....	17
4.2. Library tree with multiple occurrences of the same category .....	17
4.3. Open Product in tab .....	18
4.4. Product in tab with JSON preview .....	18
4.5. Open Category in tab .....	19
4.6. Catalog structure in the catalog root content item .....	21
4.7. Choosing a page layout for a shop page .....	22
4.8. Decision diagram .....	23
4.9. Page grid for PDPs in augmented category .....	25
4.10. Example: Contact Us Pagegrid .....	26
5.1. Actuator URLs in overview page .....	29
5.2. Actuator results for commerce.hub.cache properties .....	29

## List of Tables

1.1. Typographic conventions .....	3
1.2. Pictographs .....	4
1.3. Changes .....	5
3.1. Livecontext settings .....	13
7.1. Commercetools Commerce Adapter related Properties .....	32

# 1. Preface

This manual describes how the CoreMedia system integrates with *commercetools*.

- [Chapter 2, Overview \[6\]](#) gives a short overview of the integration.
- [Chapter 3, Connecting to a commercetools System \[11\]](#) describes how you connect a CoreMedia web application with a *commercetools* system.
- [Chapter 4, Studio Integration of Commerce Content \[16\]](#) shows the eCommerce features integrated into *CoreMedia Studio*.
- [Chapter 5, Commerce Cache Configuration \[28\]](#) describes the CoreMedia cache for eCommerce entities.
- [Chapter 6, The eCommerce API \[30\]](#) describes the basics of the eCommerce API.
- [Chapter 7, Commerce Adapter Properties \[32\]](#) describes the configuration properties for the commerce adapter.

# 1.1 Audience

This manual is intended for architects and developers who want to connect *CoreMedia Content Cloud* with an eCommerce system and who want to learn about the concepts of the product. The reader should be familiar with *CoreMedia CMS*, *commercetools*, *Spring*, *Maven* and *Docker*.

## 1.2 Typographic Conventions




CoreMedia uses different fonts and types in order to label different elements. The following table lists typographic conventions for this documentation:

Element	Typographic format	Example
Source code	Courier new	<code>cm systeminfo start</code>
Command line entries		
Parameter and values		
Class and method names		
Packages and modules		
Menu names and entries	Bold, linked with	Open the menu entry <b>Format Normal</b>
Field names	Italic	Enter in the field <i>Heading</i>
CoreMedia Components		The <i>CoreMedia Component</i>
Applications		Use <i>Chef</i>
Entries	In quotation marks	Enter "On"
(Simultaneously) pressed keys	Bracketed in "<>", linked with "+"	Press the keys <Ctrl>+<A>
Emphasis	Italic	It is <i>not</i> saved
Buttons	Bold, with square brackets	Click on the <b>[OK]</b> button
Code lines in code examples which continue in the next line	\	<code>cm systeminfo \ -u user</code>

Table 1.1. Typographic conventions



In addition, these symbols can mark single paragraphs:

Pictograph	Description
	Tip: This denotes a best practice or a recommendation.
	Warning: Please pay special attention to the text.
	Danger: The violation of these rules causes severe damage.

*Table 1.2. Pictographs*

# 1.3 Change Record

This section includes a table with all major changes that have been made after the initial publication of this manual.

Section	Version	Description
---------	---------	-------------

---

*Table 1.3. Changes*

## 2. Overview

This manual describes how the CoreMedia system integrates with *commercetools*. You will learn how to access the *commercetools* catalog from the CoreMedia system and how to develop with the *eCommerce API*.

# 2.1 Commerce Hub Architecture

Commerce Hub is the name for the CoreMedia concept which allows integrating different eCommerce systems against a stable API.

Figure 2.1, " Architectural overview of the Commerce Hub " [7] gives a rough overview of the architecture.

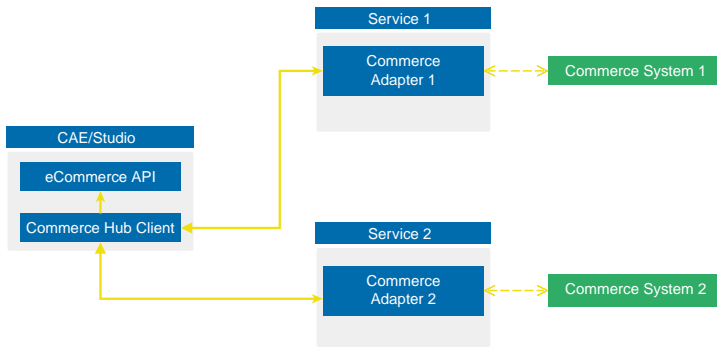


Figure 2.1. Architectural overview of the Commerce Hub

All CoreMedia components (CAE, Studio) that need access to the commerce system include a generic Commerce Hub Client. The client implements the CoreMedia eCommerce API. Therefore, you have a single, manufacturer independent API on CoreMedia side, for access to the commerce system.

The commerce system specific part exists in a service with the commerce system specific connector. The connector uses the API of the commerce system (often REST) to get the commerce data. In contrast, the generic Commerce Hub client and the Commerce Connector use gRPC for communication (see <https://grpc.io/> for details).

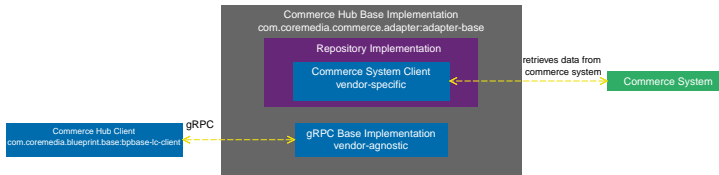


Figure 2.2. More detailed architecture view

Figure 2.2, “ More detailed architecture view ” [7] shows the architecture in more detail. At the Commerce Hub Client, you only have to configure the URL of the service and some other options, while at the Commerce System Client, you have to configure the commerce system endpoints, cache sizes and some more features.

## 2.2 Commerce Hub API

The *Commerce Hub* API consists of a gRPC API used by the *generic client*, and a Java API which consists of the Entities API as a wrapper around the gRPC messages, and a Java Feature API, used by the specific *adapter services*.

### The gRPC API

The gRPC API defines the messages and services used for the gRPC communication between *generic client* and *adapter service*. It is not necessary to access this API from any custom code. Access should be encapsulated, using the provided Java APIs, described below. In case the existing feature set does not fulfill all needs for a custom commerce integration, the gRPC API may be extended. CoreMedia provides two sample modules, showing a gRPC API extension in the *Commerce Adapter Mock*. Please have a look at the Section 3.2, "CoreMedia Commerce Adapter Mock" in *Custom Commerce Adapter Developer Manual*.

### The Java API

The Java API consists of two parts. The first part defines Java Entities as a wrapper around gRPC. It is used by the *generic client* and the server in the *base adapter*.

The second part is meant for server side only. It defines the Java Interfaces, called Repositories, the *adapter services* may implement for any needed feature. This API should be used as an entry point for commerce adapter development.

### Request flow

The request flow, using the above described APIs, starting from the generic client is as follows. Please have a look at [Figure 2.2, "More detailed architecture view" \[7\]](#) first.

1. The generic client sends a gRPC request to the vendor agnostic *base adapter*. The Entities API is used to convert the Java entity to the corresponding gRPC message.
2. The gRPC service implementation in the *base adapter* receives the gRPC request and invokes the corresponding repository methods.

While the API definition of the repositories is placed in the *base adapter*, the implementation which is called here is part of a specific commerce adapter.

The commerce adapter uses its vendor specific implementation to obtain the requested data from the commerce system. The data is then mapped to a CoreMedia commerce entity as defined by the base adapter.

Finally, the service implementation in the *base adapter* converts the given entity back to a gRPC response and sends it back to the *generic client*.

3. The *generic client* receives the gRPC response and uses the Entities API to obtain and process the requested entity.

## 3. Connecting to a commercetools System

The connection of your *Blueprint* web applications (*Studio* or *CAE*) to a *commercetools* system is configured on the Commerce Adapter side and on the CMS side. The configuration consists of two parts:

- Configuration of the Commerce Adapter to connect to a *commercetools* system (see [Section 3.1, “Configuring the Commerce Adapter” \[12\]](#)).
- Settings configuration in *Studio*. It references the Commerce Adapter endpoint, which *Studio* and *CAE* use to indirectly communicate via the Commerce Adapter with *commercetools* (see [Section 3.2, “Configuring the Shop in Content Settings” \[13\]](#)).

### WARNING

In addition to these configurations, CoreMedia requires an external identifier for every commerce item in order to provide stable references for augmented content. In the *commercetools* system these external identifiers are called `keys`.

Setting these keys for every commerce item is a prerequisite for a working *commercetools* integration.





## 3.1 Configuring the Commerce Adapter

The physical connection to the *commercetools* system is configured in the Commerce Adapter. The Commerce Adapter itself makes use of the **JVM SDK**, provided by *commercetools*.

The Commerce Adapter comes along with a set of configuration properties. Most of them have defaults and need no further customization.

For basic configuration set the following properties:

- `commercetools.api.project-key`
- `commercetools.api.client-id`
- `commercetools.api.client-secret`
- `commercetools.api.auth-url`
- `commercetools.api.api-url`

Spring Boot offers several ways to set the configuration properties, see [Spring Boot Reference Guide - 24. Externalized Configuration](#).

For more details and the full set of configuration properties see [Chapter 7, Commerce Adapter Properties \[32\]](#).

## 3.2 Configuring the Shop in Content Settings

The store specific properties that logically define a shop instance are part of the content settings. They configure the Commerce Adapter endpoint, for example, which store ID should be used, which catalog, the currency and other shop related settings.

Each site can have one single shop configuration (see the Blueprint site concept to learn what a site is). That means only shop items from exactly that shop instance (with a particular view to the product catalog) can be interwoven to the content elements of that site. In the example settings there is a `LiveContext` settings document linked with the root channel. This is the perfect place to configure these settings.

▼ commerce		Struct
endpoint	<code>\$(commerce.hub.data.endpoints.commerce...</code>	String
currency	USD	String
locale	en-US	String
▼ storeConfig		Struct
name	Commercetools Sunrise Shop	String
id	DefaultStore	String
▼ catalogConfig		Struct
id	commercetools	String

Figure 3.1. Example Commerce Settings

The following store specific settings must be configured below the struct property named `commerce` as shown in [Figure 3.1, “Example Commerce Settings”](#) [13]

Name	Type	Description	Example	Required
<code>endpoint</code>	String Property	Host and Port of the Commerce Adapter.	<code>commer- cetools- commerce- ad- apter:8565</code>	true
<code>locale</code>	String Property	The ISO locale code for the connected Catalog. This overwrites the Site locale. It is only needed if the CoreMedia Site locale differs from the Shop locale and if you need the exact Shop locale to access the catalog.	en-US	false

Name	Type	Description	Example	Required
currency	String Property	The displayed currency for all product prices.	GBP	false. If not set, the currency will be retrieved from the site locale.
storeConfig	Struct Property	Struct property containing store configuration		true
storeConfig.id	String Property	The ID of the store.	DefaultStore	true
storeConfig.name	String Property	The name of the store as it is set in the commerce system.	Commercetools Sunrise Shop	true
catalogConfig	Struct Property	Struct property containing catalog configuration.		true
catalogConfig.id	String Property	The ID of the catalog.	commercetools	true

Table 3.1. Livecontext settings

**NOTE**

Be aware, that the locale is also part of each shop context. It is defined by the locale of the site. That means all localized product texts and descriptions have the same language as the site in which they are included and one specific currency.



## 3.4 Checking the Functionality

### Prerequisites

- All commerce entities in your *commercetools* project are equipped with an external identifier, the `key`.
- The *CoreMedia Content Cloud* infrastructure has been deployed and is running.

### Check the Studio - *commercetools* Connection

1. Open *Studio*, select the "Commercetools Sunrise - English (United States)" site, open the Library. If necessary, switch the Library to browse mode.
2. In the repository tree view, locate a node named *Commercetools Sunrise Shop*. This is the entry point to browse the connected *commercetools* product catalog.
3. Browse the catalog in Studio and check if everything works as expected. [Section 4.1, "Catalog View in CoreMedia Studio Library" \[17\]](#) describes what it looks like.

If errors occur:

- Check the Studio log and the Commerce Adapter log for errors.
- Check in *CoreMedia Studio* if the "LiveContextSettings" are configured correctly, see [Section 3.2, "Configuring the Shop in Content Settings" \[13\]](#).
- Check if the *Connector for commercetools* is configured correctly (see [Section 3.1, "Configuring the Commerce Adapter" \[12\]](#)).

## 4. Studio Integration of Commerce Content

*CoreMedia Content Cloud* integrates with *commercetools*. In the following it is simply called the "commerce system" or "the shop".

From classical shop pages, like a product catalog ordered by categories or product detail pages up to landing pages or homepages, all grades of mixing content with catalog items are conceivable. The approach followed in this chapter, assumes that items from the catalog will be linked or embedded without having stored these items in the CMS system. Catalog items will be linked typically and not imported.

- [Section 4.1, "Catalog View in CoreMedia Studio Library" \[17\]](#) gives a short overview over the Catalog Integration in the *Studio* Library.
- [Section 4.2, "Augmenting Commerce Content" \[20\]](#) describes how you augment commerce content in the commerce-led scenario in *CoreMedia Studio*.

# 4.1 Catalog View in CoreMedia Studio Library

When the connection to a *commercetools* system and a concrete shop for a content site are configured as described in [Chapter 3, Connecting to a commercetools System \[11\]](#) the *Studio* Library shows the commerce catalog to browse product categories and products in the commerce catalog and to search for products and product variants. After the editor has selected a preferred site with a valid store configuration the catalog view will be enabled and the catalog will be shown in the Library:

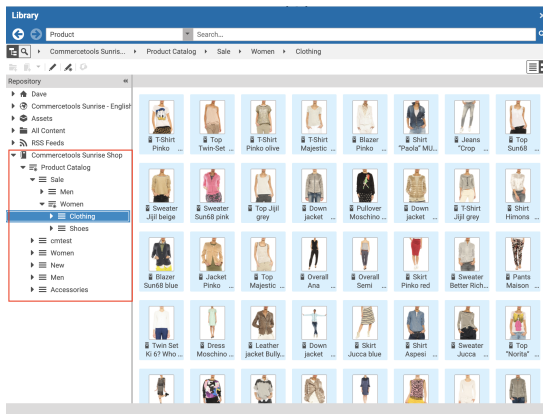


Figure 4.1. Library with catalog in the tree view

In some catalogs it is possible to put a category on multiple places within the catalog tree. But the Commerce Hub ensures that a category can only have one home (a unique parent category). All additional occurrences of a category are shown as a link in the tree. If you click on such a link node you will automatically end up at the place in the tree where the category is actually at home.



Figure 4.2. Library tree with multiple occurrences of the same category

These catalog items can be accessed and assigned to various places within your content. For example, an *eCommerce Product Teaser* document can link to a product or product variant from the catalog. The product link field (in *eCommerce Product Teaser* documents) can be filled by drag and drop from the library in catalog mode.

Linking a content (like the *eCommerce Product Teaser*) to a catalog item leads to a link that is stored in the CMS document and references the external element. Apart from the external reference (in the case of the commerce system it is typically a persistent identifier like the product code for products) no further data will be imported (importless integration).

While browsing through the catalog tree you can also open a preview of a category or a product from the library. Simply double-click on a product in the product list or use the context menu on a product or a category and choose the entry **Open in Tab** from the context menu as shown in the pictures below.

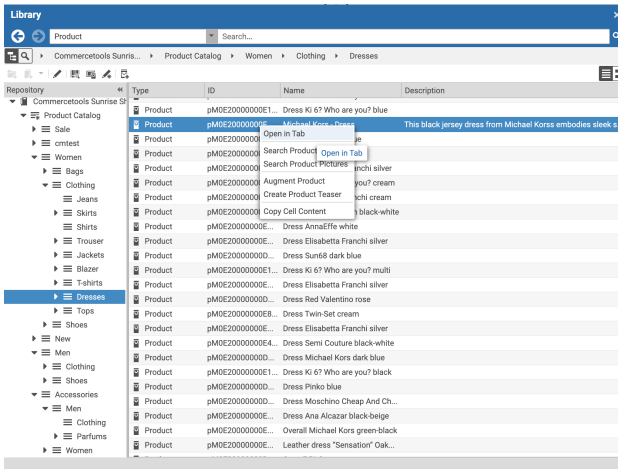


Figure 4.3. Open Product in tab

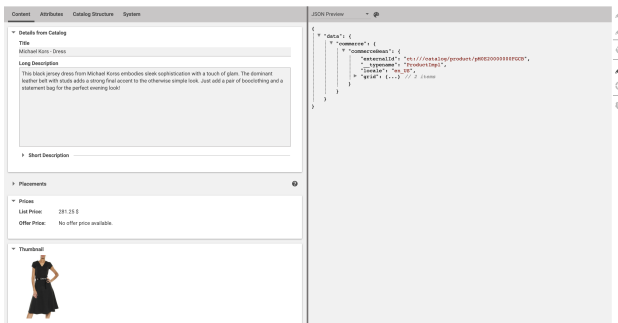


Figure 4.4. Product in tab with JSON preview

**NOTE**

For Information on how to enable the JSON preview have a look at Section 7.28, "Multiple Previews Configuration" in *Studio Developer Manual*.

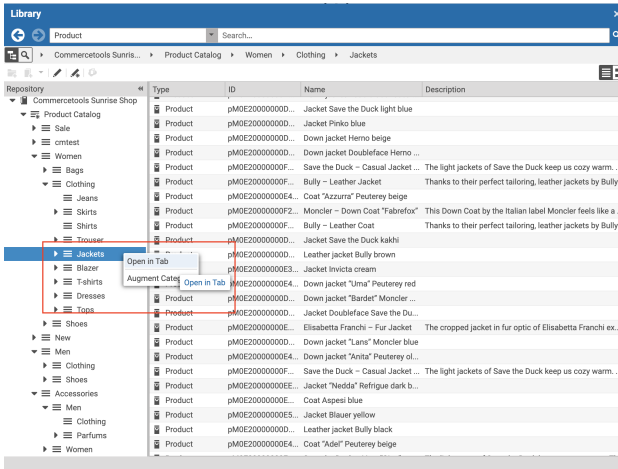


Figure 4.5. Open Category in tab

In addition to the ability to browse through the commerce catalog in an explorer-like view it is also possible to search for products and variants from catalog. As for the content search if you are in the catalog mode and you type a search keyword into the search field and press **Enter**, the search in the commerce system will be triggered and a search result displayed.



## 4.2 Augmenting Commerce Content

*CoreMedia Content Cloud* enables the user to augment pages from the Commerce System, such as products (Product Detail Pages), categories (Category Overview/Landing Pages) and other shop pages (like the Contact-Us Page linked from the Homepage Footer). The following sections describe the steps required in *Studio*.

Extending a shop page with CMS content comprises the following steps, which will be explained in the corresponding sections.

1. In the CMS create a document of type `Augmented Category`, `Augmented Product` or `Augmented Page`.
2. Augment the root nodes of the catalogs as described in [Section 4.2.1, "Augmenting the Root Nodes"](#) [20]
3. When you augment a category or product, the connection between the category/product and the `Augmented Category`/`Augmented Product` content is automatically created. For the `Augmented Page` you have to create this connection manually via an external page id property
4. In the `Augmented Category`, `Augmented Product` or `Augmented Page` choose a page layout that corresponds to the shop page layout.
5. Drop the augmenting content into the right placements of the augmented content item.

### 4.2.1 Augmenting the Root Nodes

If the shop connection is properly configured, you will see an additional top level entry in the *Studio* library that is named after your store (for example, *Commercetools Sunrise Shop*,). Below this node you can open the *Product Catalog* with categories and products. The *Product Catalog* node also represents the root category of a catalog.

*Catalog view in Studio*

To have a common ancestor for all augmented catalog pages, the root node of the configured catalog must be augmented. You can augment the root category by clicking *Augment Category* in the context menu of the root category. An augmented category content opens up, where you can start to define the default elements of your catalog pages, like the page layouts for the Category Overview Pages (CLP) and Product Detail Pages (PDP) and first content elements. All sub categories, augmented or not, will inherit these settings. See Section 6.2.3, "Adding CMS Content to Your Shop" in *Studio User Manual* for more information.

*Augmented catalog roots*

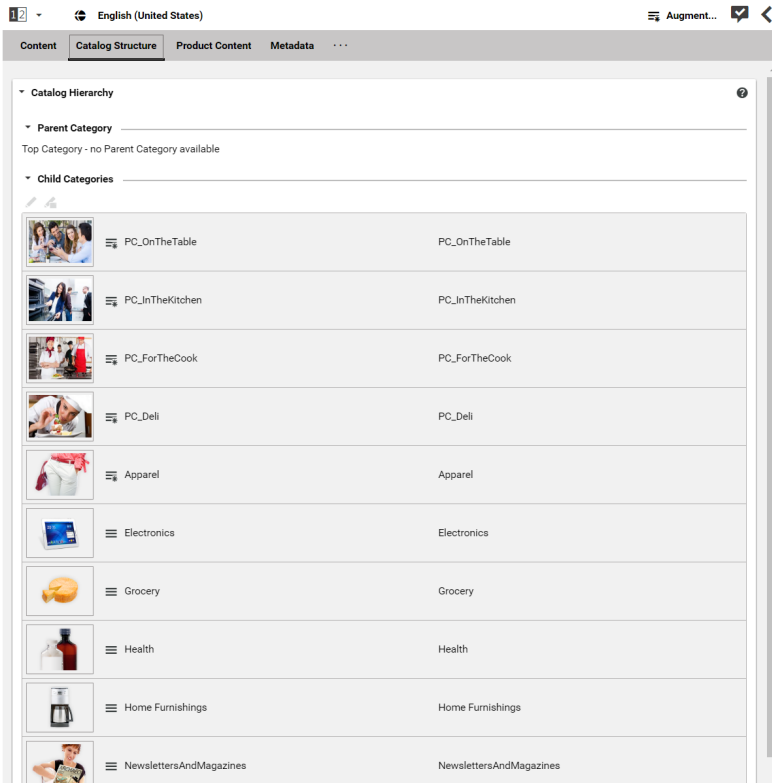


Figure 4.6. Catalog structure in the catalog root content item

Now, you can start augmenting sub categories of the catalog. All content and settings are inherited down in this hierarchy.

## 4.2.2 Selecting a Layout for an Augmented Page

*CoreMedia Content Cloud* comes with a predefined set of page layouts. Typically, this selection will be adapted to your needs in a project. By selecting a layout an editor specifies which placements the new page will have, which of them can be edited and how the placements are arranged generally. It should correspond to the actual shop page layout. All usable placements should be addressed. The placement names must match the placement names used in the slot definition on the shop side.

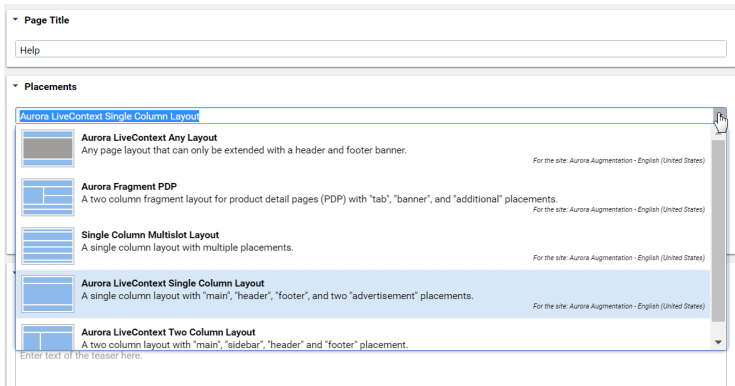


Figure 4.7. Choosing a page layout for a shop page

If you augment a category, the corresponding `Augmented Category` document contains two page layouts: the one in the `Content` tab is applied to the Category Overview Page and the other in the `Product Content` tab is used for all Product Detail Pages. Both layouts are taken from the root category. The layouts that are set there form the default layouts for a site. Hence, they should be the most commonly used layouts. If you want something different, you can choose another layout from the list.

## 4.2.3 Finding CMS Content for Category Overview Pages

A category overview page is a kind of landing page for a product category. If a user clicks on a category without specifying a certain product, then a page will be rendered that introduces a whole product category with its subcategories. Category overview pages contain a mix of product lists with and promotional content like product teasers, marketing content (that can also be product teasers but of better quality) or other editorial content.

*Category overview pages*

`Content Cloud` tries to find the required content with a hierarchical lookup, performing the following steps:

*Locating the content in the CoreMedia system*

1. Select the `Augmented Page` that is connected with the shop.
2. Search in the catalog hierarchy for an `Augmented Category` content item that references the catalog category page that should be augmented .
  - a. If there is no `Augmented Category` for the category, search the category hierarchy upwards until you find an `Augmented Category` that references one of the parent categories.

- b. If there is no *Augmented Category* at all, take the site root *Augmented Page*.
- 3. From the *Augmented Category* document found take the content from the placement which matches the placement name defined in the client query .

Figure 4.8, "Decision diagram" [23] shows the complete decision tree for the determination of the content for the category overview page or the product detail page (see below for the product detail page).

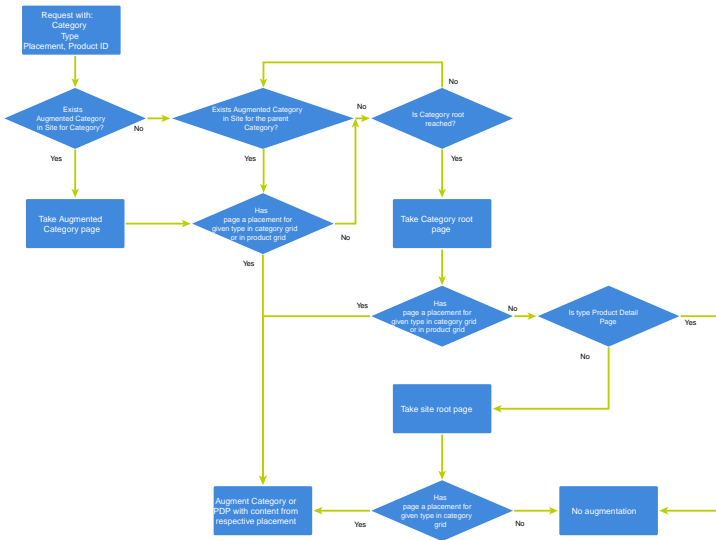


Figure 4.8. Decision diagram

Keep the following rules in mind when you define content for category overview pages:

- You do not have to create an *Augmented Category* for each category. It's enough to create such a page for a parent category. It is also quite common to create pages only for the top level categories especially when all pages have the same structure.
- You can even use the site root's *Augmented Page* to define a placement that is inherited by all categories of the site.
- If you want to use a completely different layout on a distinct page (a landing page's layout, for example, differs typically from other page's layouts), you should use different placement names for the "Landing Page Layout", for example with a `landing-page` prefix (as part of the technical identifier in the struct of the layout document). This way, pages below the intermediate landing page, which use the default layout again, can still inherit the elements from pages above the intermediate page (from

the root category, for instance), because the elements are not concealed by the intermediate page.

## 4.2.4 Finding CMS Content for Product Detail Pages

Product detail pages give you detailed information concerning a specific product. That includes price, technical details and many more. You can enhance these pages with content from the CoreMedia system similar to the category overview page.

*Product Detail Pages*

For product detail pages, the page can be directly augmented with an `Augmented Product` content type. If this is not the case, *Content Cloud* uses the same lookup as described for the category overview page. The only slight difference that the site root `Augmented Page` content item is not considered as a default for the product detail page.

*Locating the content in the CoreMedia system*

The content to augment is taken from a separate page grid of the `Augmented Category`, called *Product Content* or from the *Content* tab of the `Augmented Product`.

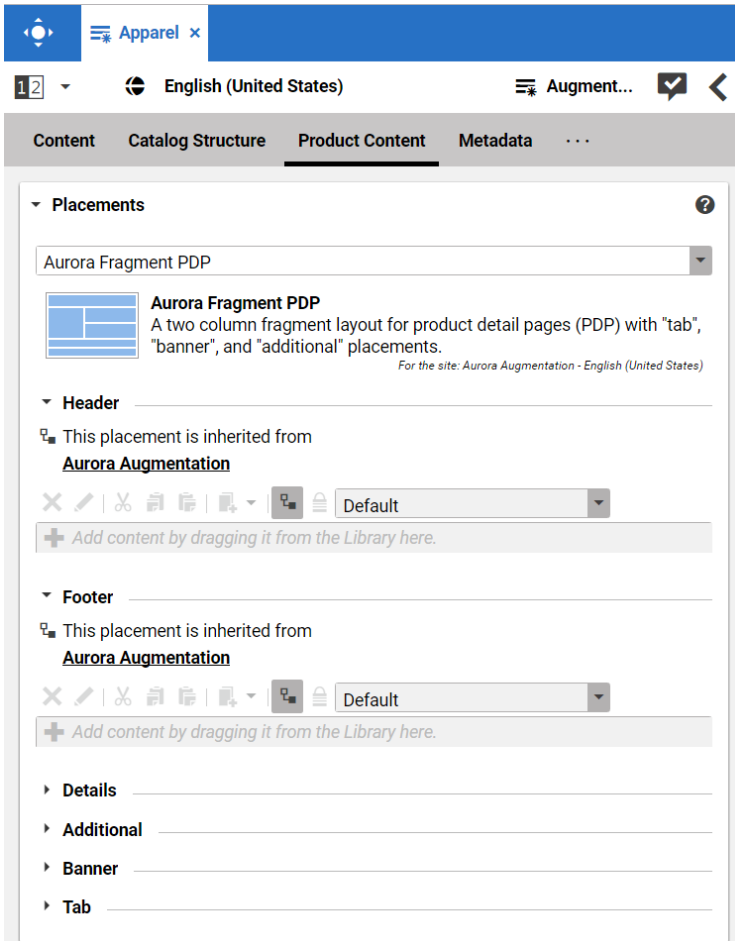


Figure 4.9. Page grid for PDPs in augmented category

## Adding CMS Assets to Product Detail Pages

To find assets for product detail pages, *Content Cloud* searches for the picture content items which are assigned to the given product. These items are then sorted in alphabetical order. See Section 6.6, “Advanced Asset Management” in *Blueprint Developer Manual* for details.

*Locating the assets in the CoreMedia system*

## 4.2.5 Adding CMS Content to Non-Catalog Pages [Other Pages]

Non-catalog pages [Augmented Pages] like 'Contact Us', 'Log On' or even the homepage are shop pages, which can also be extended with CMS content. The homepage case is quite obvious. The need to enrich the homepage with a custom layout and a mix of promotional and editorial content is very clear. However, the less prominent pages can also profit from extending with CMS content. For example, context-sensitive hotline teasers, banners or personalized promotions could be displayed on those pages.

*Non Catalog Pages  
[Other Pages]*

You can augment a non-catalog page by following steps using the common content creation dialog:

1. Create a document of type *Augmented Page* and add it to the *Navigation Children* property of the site root content.
2. Enter the ID of the other page below the navigation tab into the *External Page ID* field of the *Augmented Page*.

In the following example a banner picture was added to an existing "Contact Us" shop page. To do so, you have to create an *Augmented Page*, select a corresponding page layout and put a picture to the *Header* placement.

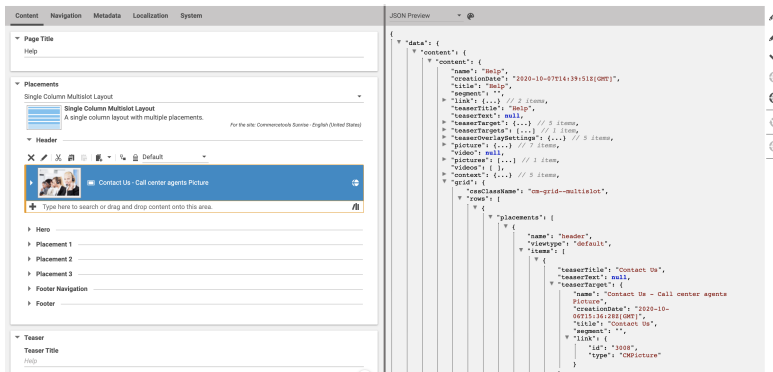


Figure 4.10. Example: Contact Us Pagegrid

The case to augment a non-catalog page with *CoreMedia Studio* differs only slightly from augmenting a catalog page. You use *Augmented Page* instead of *Augmented Category* and instead of linking to a category content, you have to enter a page ID in the *External Page ID* field. The page ID identifies the page unambiguously.

*Difference between the  
augmentation of cata-  
log and other pages*

### NOTE

Be aware that the property *External Page ID* must be unique within all other "Other Pages" of that site. Otherwise, the rendering logic is not able to resolve the matching page correctly. A validator in *CoreMedia Studio* displays an error message, if a collision of duplicate *External Page ID* values occurs. Your navigation hierarchy can differ from the "real" shop hierarchy. There is also no need to gather all pages below the root page. You can completely use your custom hierarchy with additional pages in between, that are set *Hidden in Navigation* but can be used to define default content for are group pages.





# 5. Commerce Cache Configuration

The CoreMedia system uses caching to provide a faster access to various eCommerce entities (that is, products, categories, etc.). These entities will automatically be cached when used by the CoreMedia system. Unified API cache keys are used for caching the commerce entities.

The caching of commerce entities is implemented on different layers in the Commerce Hub infrastructure:

- Caching is implemented in the Commerce Adapter to accelerate access to commerce entities and to avoid heavy traffic on the *commercetools* system due to multiple clients connected to the same system.
- Caching is implemented in the generic client library which is used in Studio and Content Application Engine. This avoids redundant network communication with the Commerce Adapter when accessing commerce entities.

For each entity a default capacity and cache time is configured in Spring. Each of the default values can be adapted to the needs of your system environment by overwriting the corresponding properties. There is a reasonable default configuration for the commerce cache which can be customized to meet your project requirements.

Refer the [Chapter 7, Commerce Adapter Properties \[32\]](#) if you want to adjust the cache configuration for your Commerce Adapter

In order to adjust the cache configuration for Studio and Content Application Engine you can use the following properties [see Section 4.6, "Commerce Hub Properties" in *Deployment Manual* for details] for cache capacities and cache timeouts respectively:

- `commerce.hub.cache.capacities.*`
- `commerce.hub.cache.timeoutSeconds.*`

### ACTUATOR URLS

Service	Actuator Shortcuts	Status
Content Management Server	Info · Logfile · Environment · Config · Health	HEALTHY
Master Live Server	Info · Logfile · Environment · Config · Health	HEALTHY
Workflow Server	Info · Logfile · Environment · Config · Health	HEALTHY
Content Feeder	Info · Logfile · Environment · Config · Health	HEALTHY
User Changes	Info · Logfile · Environment · Config · Health	HEALTHY
Elastic Worker	Info · Logfile · Environment · Config · Health	HEALTHY
CAE Feeder Preview	Info · Logfile · Environment · Config · Health	HEALTHY
CAE Feeder Live	Info · Logfile · Environment · Config · Health	HEALTHY

Figure 5.1. Actuator URLs in overview page

You have to replace the trailing "\*" with the configuration key of the concrete cache key. You can find the keys and the default values using the Actuator URLs from the default overview page (<https://overview.docker.localhost>) in the default Blueprint Docker deployment. Click the *Config* link and search for the `commerce.hub.cache` prefix.

```

""
"commerce.hub.cache-com.coremedia.blueprint.base.livecontext.client.config.CommerceAdapterClientCacheConfigurationProperties": {
  "prefix": "commerce.hub.cache",
  "properties": {
    "exposeProxy": false,
    "timeoutSeconds": {
      "product": 3600,
      "category": 3600,
      "catalogsforstore": 86400,
      "linkcategory": 60,
      "linkproduct": 60,
      "linkcontent": 60,
      "linkexternalpage": 60,
      "linkexternalpagenonseo": 60,
      "segment": 5000,
      "segments": 3600,
      "facetsforproductsearch": 300,
    }
  }
}

```

Figure 5.2. Actuator results for `commerce.hub.cache` properties

## 6. The eCommerce API

The *eCommerce API* is a Java API provided by *CoreMedia Content Cloud* that can be used to build shop applications.

The *eCommerce API* is used internally to render catalog-specific information into standard templates. Furthermore, the Studio Library integration makes use of the API to browse and work with catalog items. If you develop your own shop application you will use the API in your templates and/or business logic (handlers and beans).

Various services allow you to access the eCommerce system for different tasks:

<code>CatalogService</code>	This service can be used to access the product catalog in many ways: traverse the category tree, products by category, various product and category searches.
<code>MarketingSpotService</code>	This service gives you access to Commerce e-Marketing Spots, a common method to use marketing content (product teasers, images, texts) depending on the customer segments.
<code>SegmentService</code>	This service lets you access customer segments, for example, the customer segments the current user is a member of.
<code>CartService</code>	This service lets you manage orders.
<code>AssetService</code>	This service lets you retrieve catalog assets, for example, product pictures or downloads, that are managed by the CMS. Unlike other services, this service only accesses the CMS.

The Commerce API includes some additional methods that denotes the vendor (the name, the version). In *CoreMedia Studio* there is an option to open a management application for a commerce item (product or category). The required base URL is also set through on the vendor specific connection.

The following key points will give you a short overview of the components that are also involved. They build up an infrastructure to bootstrap a connection to a commerce system and/or perform other supportive tasks.

<code>Commerce</code>	This class is the essential part of the bootstrap mechanism to access a commerce system. You
-----------------------	--

can use it to create a connection to your commerce system.

<code>CommerceConnectionInitializer</code>	This class is used to initialize a request specific commerce connection. The resolved connection is stored in a thread local variable. The <code>CommerceConnection</code> class provides access to all vendor specific eCommerce service implementations.
<code>CommerceBeanFactory</code>	This class creates <code>CommerceBeans</code> whose implementation is defined via Spring. It is also used by the services to respond service calls, for example, instances of <code>Product</code> and/or <code>Category</code> beans. You can integrate your own commerce bean implementations via Spring (inheriting from the original bean implementation and place your own code would be a typical pattern).
<code>StoreContextProvider</code>	This class retrieves an applicable <code>StoreContext</code> (the shop configuration that contains information like the shop name, the shop ID, the locale and the currency).
<code>UserContextProvider</code>	This class is responsible to retrieve the current <code>UserContext</code> . Some operations, like requesting dynamic price information, demand a user login. These requests can be made on behalf of the requesting user. User name and user ID are then part of the user context.
<code>CommerceIdProvider</code>	The class <code>CommerceIdProvider</code> is used to create <code>CommerceId</code> instances. The class <code>CommerceId</code> is able to format and parse references to resources in the commerce items. References to commerce items will be possibly stored in content, like a product teaser stores a link to the commerce product.

Commerce beans are cached depending on time. Cache time and capacity can be configured via Spring.

Please refer to the Javadoc of the `Commerce` class as a good starting point on how to use the *eCommerce API*.

## 7. Commerce Adapter Properties

```
commercetools.api.api-url
```

Type `java.lang.String`

Default

Description The base URL, with protocol and port (if needed), to access the commercetools API.

```
commercetools.api.auth-url
```

Type `java.lang.String`

Default

Description The absolute URL, with protocol and port (if needed), used for authorization at the commercetools system.

```
commercetools.api.client-id
```

Type `java.lang.String`

Default

Description The unique identifier of the API client.

```
commercetools.api.client-secret
```

Type `java.lang.String`

Default

Description The confidential client secret.

```
commercetools.api.fail-on-api-deprecation
```

Type	java.lang.Boolean
Default	false
Description	Decorate the SphereClient (responsible for all call to the commercetools system) with a DeprecationExceptionSphereClientDecorator in order to throw an exception on usage of deprecated API calls.

```
commercetools.api.project-key
```

Type	java.lang.String
Default	
Description	The unique key of the commercetools project.

```
commercetools.api.scopes
```

Type	java.lang.String
Default	
Description	A comma separated list of scopes, the API client should have access to.

```
commercetools.default-locale
```

Type	java.util.Locale
Default	
Description	The default locale for accessing the commerce system if no locale parameter was passed into request.

```
commercetools.product-data-version
```

Type	com.coremedia.commerce.adapter.commercetools.config.ProductDataVersion
Default	
Description	The version of the product data. Can be current for published data or staged for preview.

```
commercetools.search-enable-language-fallback
```

Type	java.lang.Boolean
Default	true
Description	True if language of locale shall be used in search requests.
<code>commercetools.search-max-result-size</code>	
Type	java.lang.Integer
Default	200
Description	Maximum search result size.
<code>cache.capacities</code>	
Type	java.util.Map<java.lang.String,java.lang.Long>
Default	
Description	Number of cache entries per cache key, until cache eviction takes place. Example: <code>commercetools.cache.capacities.product=50000</code>
<code>cache.is-enabled</code>	
Type	java.lang.Boolean
Default	false
Description	Enable or disable caching.
<code>cache.timeout-seconds</code>	
Type	java.util.Map<java.lang.String,java.lang.Long>
Default	
Description	TTL in seconds until certain cache entries are invalidated. Example: <code>commercetools.cache.timeout-seconds.product=300</code>
<code>metadata.additional-metadata</code>	
Type	java.util.Map<java.lang.String,java.lang.String>

### Default

**Description** Map of additional metadata.  
Can be used as customization hook. All properties starting with "metadata.additional-metadata.\*" are transmitted to the generic client on the CMS side.

```
metadata.custom-entity-param-names
```

**Type** java.util.Collection<java.lang.String>

### Default

**Description** List of parameter names, which values need to be transmitted with every entity request from the CMS side.

```
metadata.replacement-tokens
```

**Type** java.util.Map<java.lang.String,java.lang.String>

### Default

**Description** Map of key value pairs.  
Used as replacement map for example for link building in the generic client on the CMS side.

```
metadata.supports-multi-catalog
```

**Type** java.lang.Boolean

**Default** false

**Description** Flag if commerce adapter implementation supports multiple catalogs.

```
metadata.vendor
```

**Type** java.lang.String

### Default

**Description** Name of the vendor.



Used to identify the connected vendor on the CMS side.

*Table 7.1. Commercetools Commerce Adapter related Properties*

# Glossary

Approve	<i>CoreMedia CMS</i> contains a Content Management Environment for content creation and management and a Content Delivery Environment for content delivery. Content has to be published from the Management Environment to the Delivery Environment in order to become visible to customers. Before content can be published, it has to be approved. This way, <i>CoreMedia CMS</i> supports the dual control principle.
Blob	Binary Large Object or short blob, a property type for binary objects, such as graphics.
Content Delivery Environment	<p>The <i>Content Delivery Environment</i> is the environment in which the content is delivered to the end-user.</p> <p>It may contain any of the following modules:</p> <ul style="list-style-type: none"> <li>• <i>CoreMedia Master Live Server</i></li> <li>• <i>CoreMedia Replication Live Server</i></li> <li>• <i>CoreMedia Content Application Engine</i></li> <li>• <i>CoreMedia Search Engine</i></li> <li>• <i>Elastic Social</i></li> <li>• <i>CoreMedia Adaptive Personalization</i></li> </ul>
Content item	In <i>CoreMedia CMS</i> , content is stored as self-defined content items. Content items are specified by their properties or fields. Typical content properties are, for example, title, author, image and text content.
Content Management Environment	<p>The <i>Content Management Environment</i> is the environment for editors. The content is not visible to the end user. It may consist of the following modules:</p> <ul style="list-style-type: none"> <li>• <i>CoreMedia Content Management Server</i></li> <li>• <i>CoreMedia Workflow Server</i></li> <li>• <i>CoreMedia Importer</i></li> <li>• <i>CoreMedia Site Manager</i></li> <li>• <i>CoreMedia Studio</i></li> <li>• <i>CoreMedia Search Engine</i></li> <li>• <i>CoreMedia Adaptive Personalization</i></li> <li>• <i>CoreMedia Preview CAE</i></li> </ul>
Content Management Server	Server on which the content is edited. Edited content is published to the Master Live Server.

## Glossary |

Content Repository	<i>CoreMedia CMS</i> manages content in the Content Repository. Using the Content Server or the UAPI you can access this content. Physically, the content is stored in a relational database.
Content Server	<i>Content Server</i> is the umbrella term for all servers that directly access the CoreMedia repository:  <i>Content Servers</i> are web applications running in a servlet container. <ul style="list-style-type: none"><li>• <i>Content Management Server</i></li><li>• <i>Master Live Server</i></li><li>• <i>Replication Live Server</i></li></ul>
Content type	A content type describes the properties of a certain type of content. Such properties are for example title, text content, author, ...
Controm Room	<i>Controm Room</i> is a <i>Studio</i> plugin, which enables users to manage projects, work with workflows, and collaborate by sharing content with other <i>Studio</i> users.
CoreMedia Studio	<i>CoreMedia Studio</i> is the working environment for business specialists. Its functionality covers all the stages in a web-based editing process, from content creation and management to preview, test and publication.  As a modern web application, <i>CoreMedia Studio</i> is based on the latest standards like Ajax and is therefore as easy to use as a normal desktop application.
Dead Link	A link, whose target does not exist.
Elastic Social	<i>CoreMedia Elastic Social</i> is a component of <i>CoreMedia CMS</i> that lets users engage with your website. It supports features like comments, rating, likings on your website. <i>Elastic Social</i> is integrated into <i>CoreMedia Studio</i> so editors can moderate user generated content from their common workplace. <i>Elastic Social</i> bases on NoSQL technology and offers nearly unlimited scalability.
Folder	A folder is a resource in the CoreMedia system which can contain other resources. Conceptually, a folder corresponds to a directory in a file system.
Folder hierarchy	Tree-like connection of folders, where the root folder forms the origin of the tree.
Home Page	The main entry point for all visitors of a site. Technically it is often referred to as root document and also serves as provider of the default layout for all subpages.
IETF BCP 47	Document series of <i>Best current practice</i> [BCP] defined by the Internet Engineering Task Force (IETF). It includes the definition of IETF language tags, which are an abbreviated language code such as en for English, pt-BR for Brazilian Portuguese, or nan-Hant-TW for Min Nan Chinese as spoken in Taiwan using traditional Han characters.
Locale	Locale is a combination of country and language. Thus, it refers to translation as well as to localization. Locales used in translation processes are typically represented as IETF BCP 47 language tags.

## Glossary |

Markup	Marking of parts of a document, structurally (section, paragraph, quote, ...) or with layout (bold, italic, ...).
Master Live Server	The <i>Master Live Server</i> is the heart of the <i>Content Delivery Environment</i> . It receives the published content from the <i>Content Management Server</i> and makes it available to the <i>CAE</i> . If you are using the <i>CoreMedia Multi-Master Management Extension</i> you may use multiple <i>Master Live Server</i> in a CoreMedia system.
Master Site	A master site is a site other localized sites are derived from. A localized site might itself take the role of a master site for other derived sites.
MIME	With Multipurpose Internet Mail Extensions (MIME), the format of multi-part, multi-media emails and of web documents is standardised.
Personalisation	On personalised websites, individual users have the possibility of making settings and adjustments which are saved for later visits.
Projects	A project is a collection of content items in CoreMedia CMS created by a specific user. A project can be managed as a unit, published or put in a workflow, for example.
Property	<p>In relation to CoreMedia, properties have two different meanings:</p> <p>In CoreMedia, content items are described with properties (content fields). There are various types of properties, e.g. strings (such as for the author), Blobs (e.g. for images) and XML for the textual content. Which properties exist for a content item depends on the content type.</p> <p>In connection with the configuration of CoreMedia components, the system behavior of a component is determined by properties.</p>
Publication	Creates or updates resources on the Live Server.
Resource	A folder or a content item in the CoreMedia system.
Responsive Design	Responsive design is an approach to design a website that provides an optimal viewing experience on different devices, such as PC, tablet, mobile phone.
Root folder	The uppermost folder in the CoreMedia folder hierarchy. Under this folder, CoreMedia users can add further folders and content items.
Site	<p>A site is a cohesive collection of web pages in a single locale, sometimes referred to as localized site. In <i>CoreMedia CMS</i> a site especially consists of a site folder, a site indicator and a home page for a site.</p> <p>A typical site also has a master site it is derived from.</p>
Site Folder	All contents of a site are bundled in one dedicated folder. The most prominent document in a site folder is the site indicator, which describes details of a site.
Site Indicator	A site indicator is the central configuration object for a site. It is an instance of a special content type, most likely <u>CMSite</u> .

## Glossary |

Site Manager	<p>Swing component of CoreMedia for editing content items, managing users and workflows.</p> <p>The Site Manager is deprecated for editorial use.</p>
Site Manager Group	<p>Members of a site manager group are typically responsible for one localized site. Responsible means that they take care of the contents of that site and that they accept translation tasks for that site.</p>
Teaser	<p>A short piece of text or graphics which contains a link to the actual editorial content.</p>
Translation Manager Role	<p>Editors in the translation manager role are in charge of triggering translation workflows for sites.</p>
Version history	<p>A newly created content item receives the version number 1. New versions are created when the content item is checked in; these are numbered in chronological order.</p>
Weak Links	<p>In general <i>CoreMedia CMS</i> always guarantees link consistency. But links can be declared with the <i>weak</i> attribute, so that they are not checked during publication or withdrawal.</p> <p>Caution! Weak links may cause dead links in the live environment.</p>
Workflow	<p>A workflow is the defined series of tasks within an organization to produce a final outcome. Sophisticated applications allow you to define different workflows for different types of jobs. So, for example, in a publishing setting, a document might be automatically routed from writer to editor to proofreader to production. At each stage in the workflow, one individual or group is responsible for a specific task. Once the task is complete, the workflow software ensures that the individuals responsible for the next task are notified and receive the data they need to execute their stage of the process.</p>
Workflow Server	<p>The <i>CoreMedia Workflow Server</i> is part of the Content Management Environment. It comes with predefined workflows for publication and global-search-and-replace but also executes freely definable workflows.</p>
XLIFF	<p>XLIFF is an XML-based format, standardized by OASIS for the exchange of localizable data. An XLIFF file contains not only the text to be translated but also metadata about the text. For example, the source and target language. <i>CoreMedia Studio</i> allows you to export content items in the XLIFF format and to import the files again after translation.</p>

# Index

## C

- catalog, 17
- commerce adapter
  - configuration, 12
- commercetools shop configuration, 11

## E

- eCommerce API, 30

## L

- Library
  - catalog view, 17